



TRUMPET REFERENCE

Vacuum Tube Phonostage



Made in USA.

Copyrights & Trademarks

© Copyright Hagerman Audio Labs 2013. All rights reserved. No part of this document may be photocopied, reproduced, or translated to another language without the prior written consent.

Disclaimer

The information contained in this document is subject to change without notice. Hagerman Audio Labs shall not be liable for errors contained herein or for consequential damages in connection with the furnishing, performance, or use of this material.

Warranty

Hagerman Audio Labs warrants this product free of defects in materials and workmanship for a period of 10 years (90 days on tubes). If you discover a defect, Hagerman Audio Labs will, at its option, repair or replace the product at no charge to you provided you return it during the warranty period, transportation charges prepaid to Hagerman Audio Labs. This warranty does not apply if the product has been damaged by negligence, accident, abuse or misuse or misapplication, has been damaged because it has been improperly connected to other equipment or has been modified without the express written permission of Hagerman Audio Labs. This warranty is limited to the replacement or repair of this product and not to damage to equipment of other manufacturers. Any applicable implied warranties, including warranty of merchantability, are limited in duration to a period of the express warranty as provided herein beginning with the original date of purchase and no warranties, whether express or implied shall apply to the product thereafter. Under no circumstances shall Hagerman Audio Labs be liable for any loss, direct, indirect, incidental, special, or consequential damage arising out of or in connection with the use of this product.

Hagerman Audio Labs

PO Box 61911

Honolulu, HI 96839

808-383-2704

www.haglabs.com

Description

The Trumpet Reference is a true reference-class phonostage for the most demanding of audiophiles. Based on the original Trumpet (Stereophile class-A recommended component), it adds pushbutton control of all functions, a second input, and upgrades for many of the components. The chassis has also been changed to reflect the reality of equipment racks by putting the power supply and amplifier boards in a side-by-side configuration. Status LEDs on the front panel indicate operational settings of the various functions. In addition to standard RIAA equalization, three other curves used in the LP "microgroove" era have been included. This combination of features, convenience, and sonic performance are unmatched at this price.

Specifications

Item	Specification
Gain	44dB (MM) / 64dB, 70dB (MC)
Input Impedance	47k (MM) / 1k, 322, 181, 131, 91, 76, 64, 57 (MC)
Output Impedance	800 ohm
RIAA Response	+/-0.5dB from 20Hz to 20kHz
Bandwidth	8Hz to 500kHz
Distortion	<0.05% @1kHz
Noise	70dBA (MC)
Size	17" x 12" x 5"
Weight	19 lbs.
Power	120Vac / 240Vac, 70W
Tube Compliment	12AX7 x 4, 12AU7 x 4

Operation

The Trumpet Reference installs between your turntable and linestage. Be sure to connect the ground lead to the grounding lug near the inputs. Connect the power cord to an AC source. Turn on using the power switch on the back panel. Press the *POWER* button on the front. Immediately the heaters will turn on and after a 32 second delay the high voltage supplies will activate.

Controls

Control	Description
POWER	This button toggles power on and off. The left LED indicates heater voltage for the tubes; the right LED indicates high voltage.
EQ	There are four settings defined by turnover and cut, arranged left to right: 400Hz / 11dB (AES, early ffr) 500Hz / 11dB (Decca, EMI, late ffr) 500Hz / 13.7dB (RIAA) 500Hz / 16dB (Columbia, NAB)
STEREO	Left LED is mono.
INPUT	Left LED is MM.
POLARITY	Left LED is inverted (MC).
GAIN	There are two gain settings (MC): 64dB (>0.25mV cart) 70dB (<0.25mV cart)
LOADING	There are eight loading settings (MC), arranged left to right: 1k 322 181 131 91 76 64 57

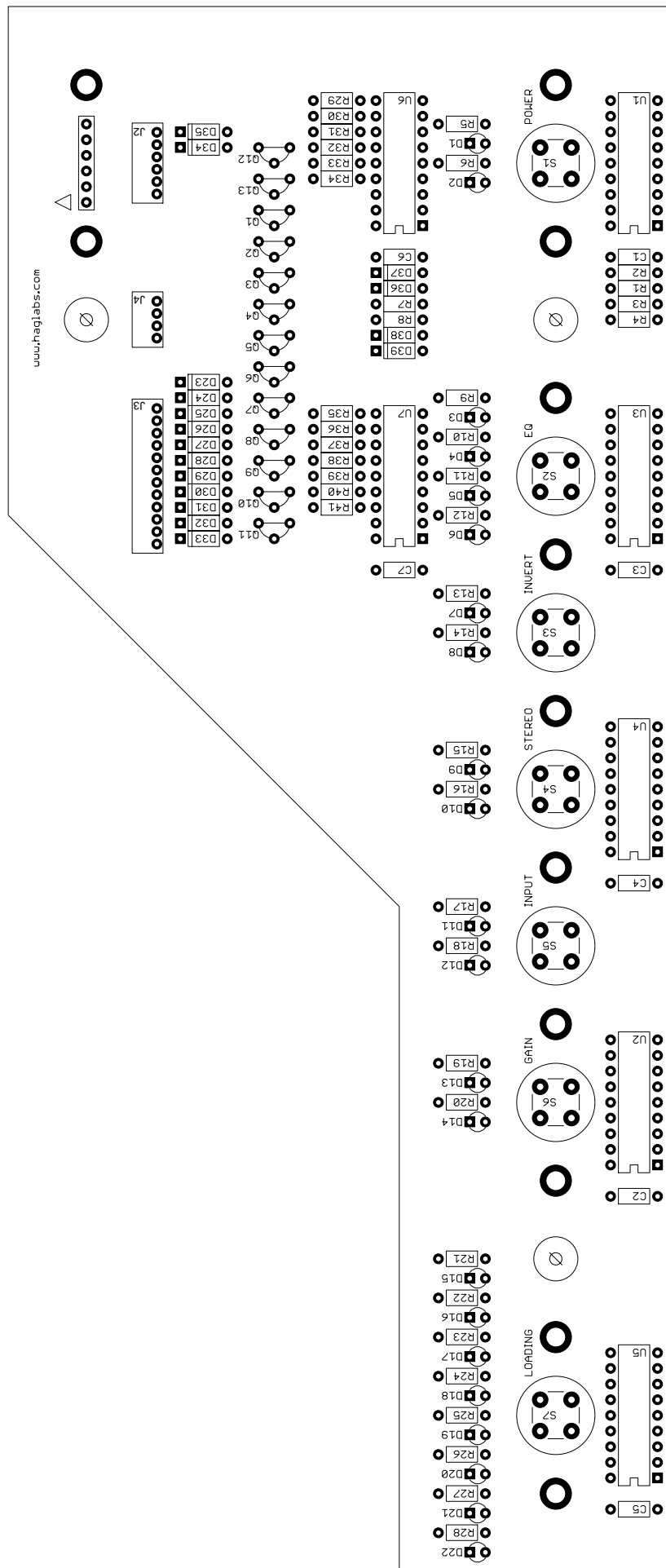
Commentary

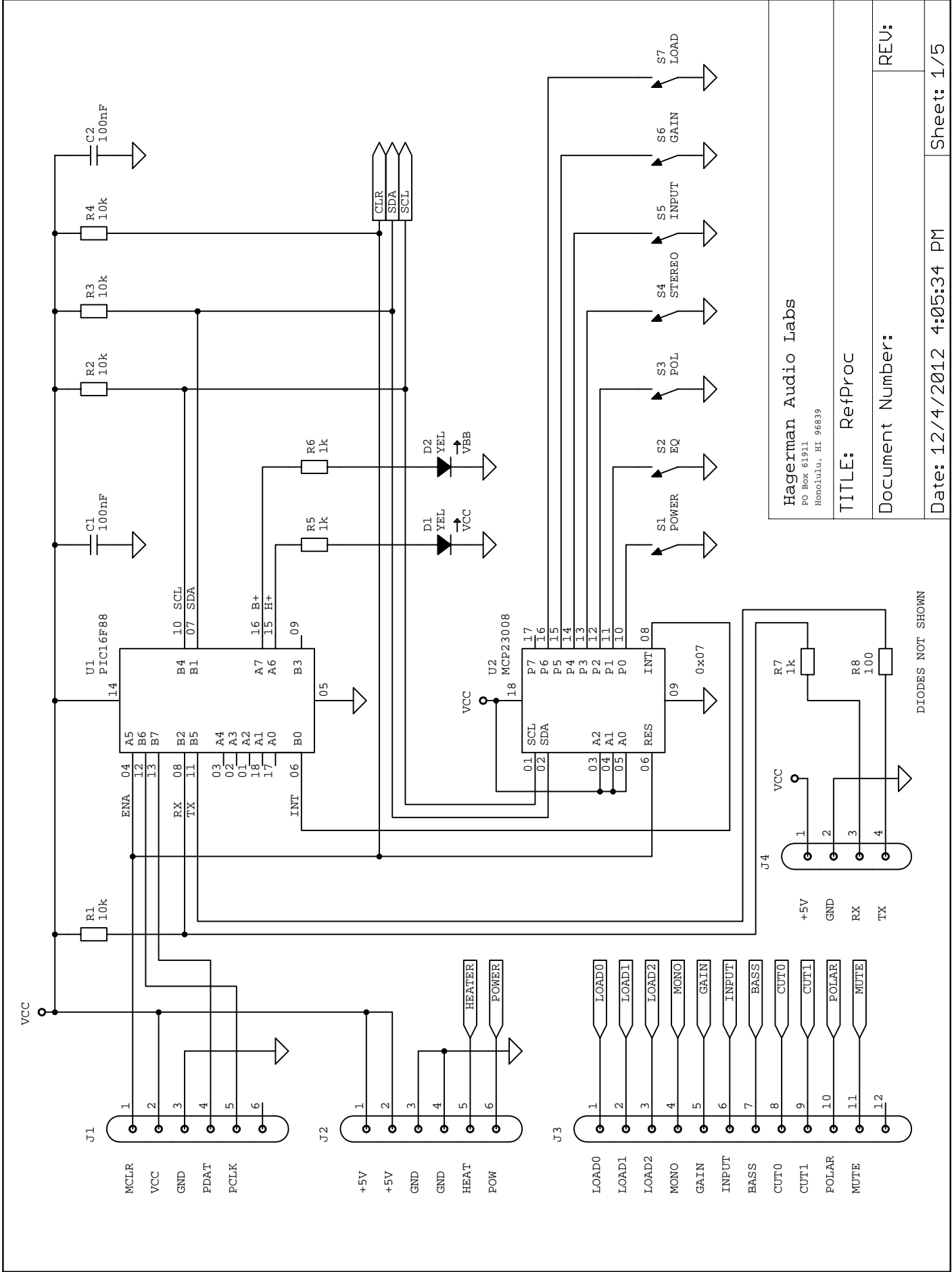
The Trumpet Reference responds admirably to tube rolling. New old stock (NOS) tubes are generally the best, offering various sonic improvements, with the final result becoming a matter of personal taste. Try to match in left/right pairs, to maintain equalization frequency balance. Always replace tubes with their equivalents! Do not use, for example, a 12AT7 in one of the 12AX7 locations. Starting from the rear of the unit, the tubes are in order: 12AX7, 12AX7, 12AU7, 12AU7.

Cartridge loading depends on the length and type of interconnects used and it is always good to start with a value close to the manufacturer's recommendation. Generally, loading provided by the Trumpet Reference is effectively *lower* than the equivalent from a transformer. That is, if you like the sound from 100 ohm transformer loading (into the MM input), then try the 131 ohm setting on the MC input. In the end, do *not* worry about numbers. Adjust to what your ears prefer.

As far as gain selection, it is better to go with *lower* gain if possible. This optimizes overall headroom and distortion of the audio system.

The EQ settings provide various curves for achieving better sound from your vinyl playback. The 3rd LED from the left is RIAA (modern) as will be used most often. The Decca and Columbia curves help with some older microgroove LPs. Again, this is adjusted for personal preference, and was never an exact science. Nevertheless, this can make a significant improvement for certain instruments such as violin and on vocals.





Hagerman Audio Labs
 PO Box 61911
 Honolulu, HI 96839

TITLE: RefProc

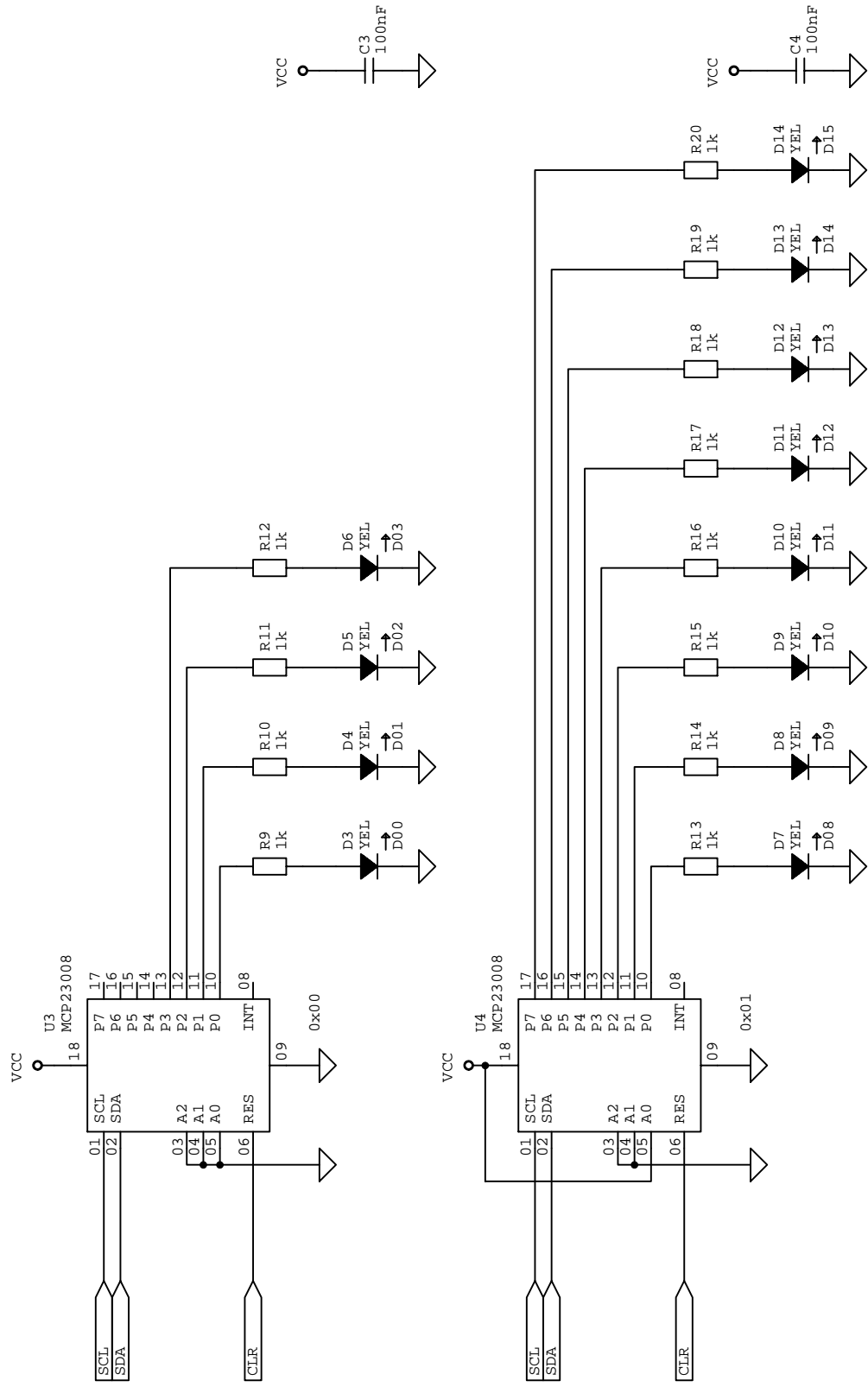
Document Number:

REV:

Date: 12/4/2012 4:05:34 PM

Sheet: 1/5

DIODES NOT SHOWN



Hagerman Audio Labs
 PO Box 61911
 Honolulu, HI 96839

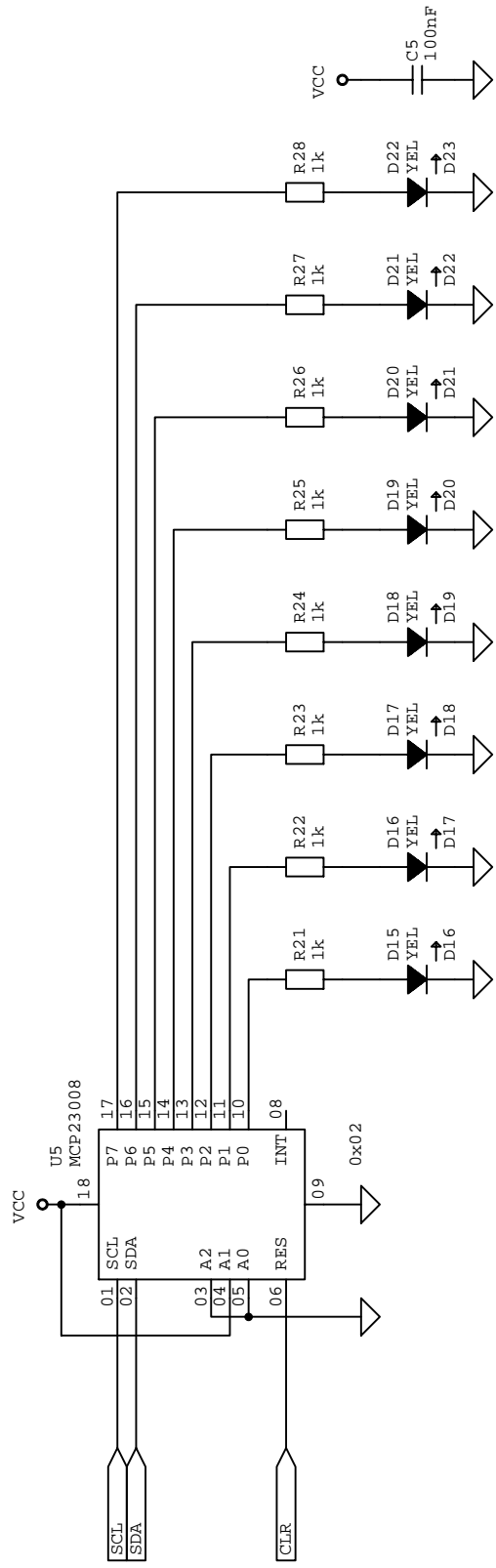
TITLE: RefProc

Document Number:

REV:

Date: 12/4/2012 4:05:34 PM

Sheet: 2/5



Hagerman Audio Labs
 PO Box 61911
 Honolulu, HI 96839

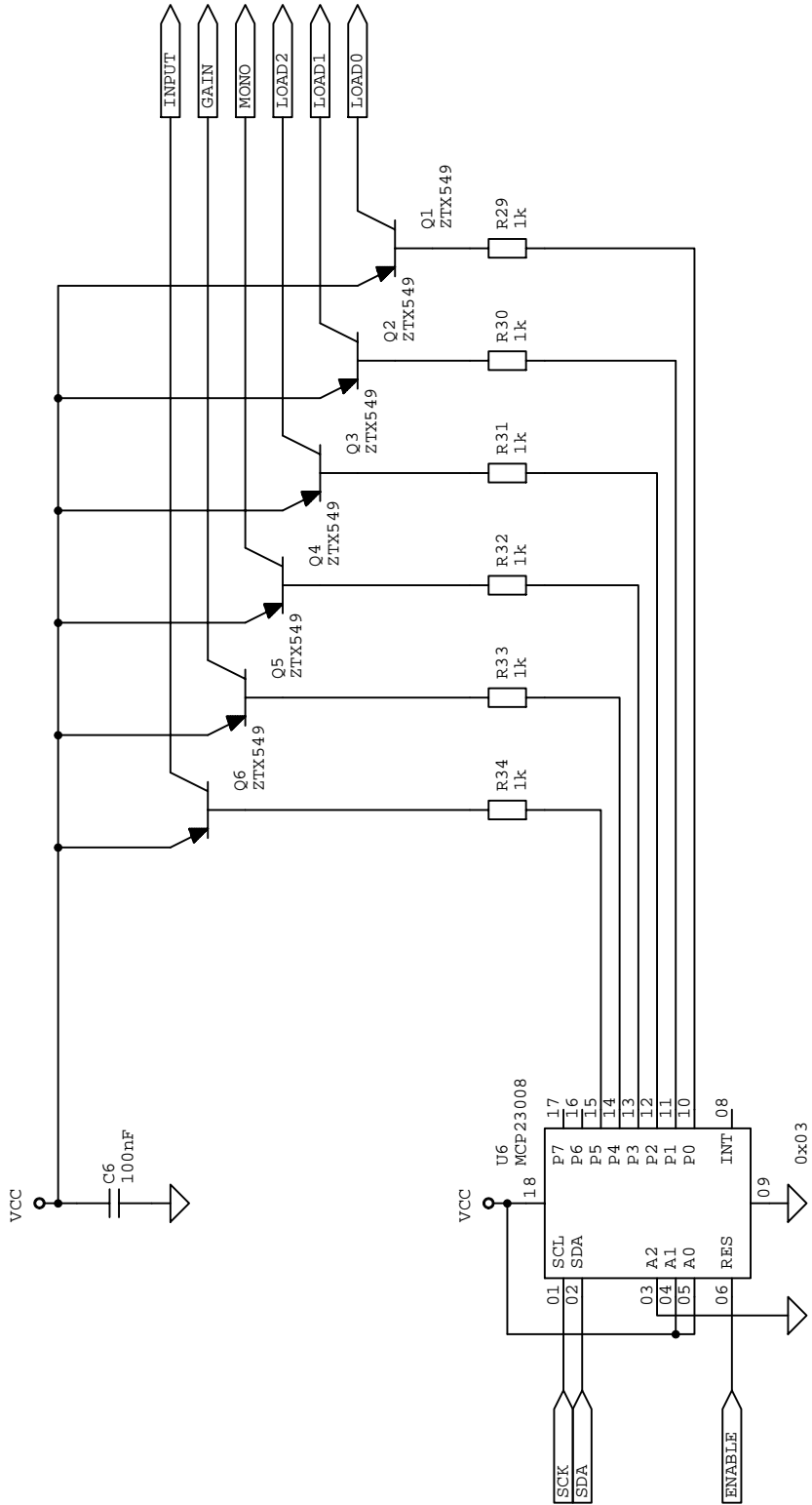
TITLE: RefProc

Document Number: _____

REU: _____

Date: 12/4/2012 4:05:34 PM

Sheet: 3/5



Hagerman Audio Labs
 PO Box 61911
 Honolulu, HI 96839

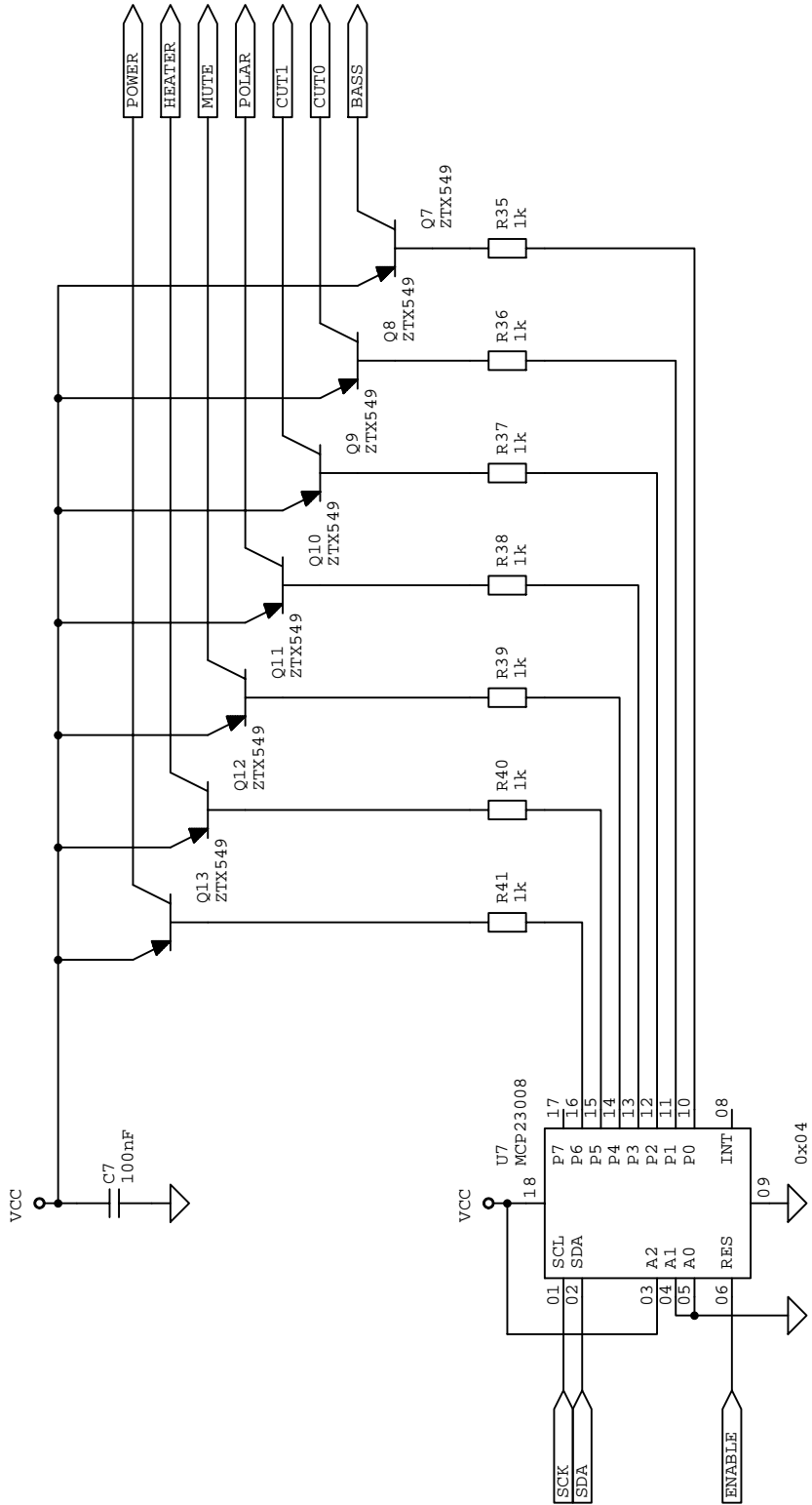
TITLE: RefProc

Document Number:

REV:

Date: 12/4/2012 4:05:34 PM

Sheet: 4/5



Hagerman Audio Labs
 PO Box 61911
 Honolulu, HI 96839

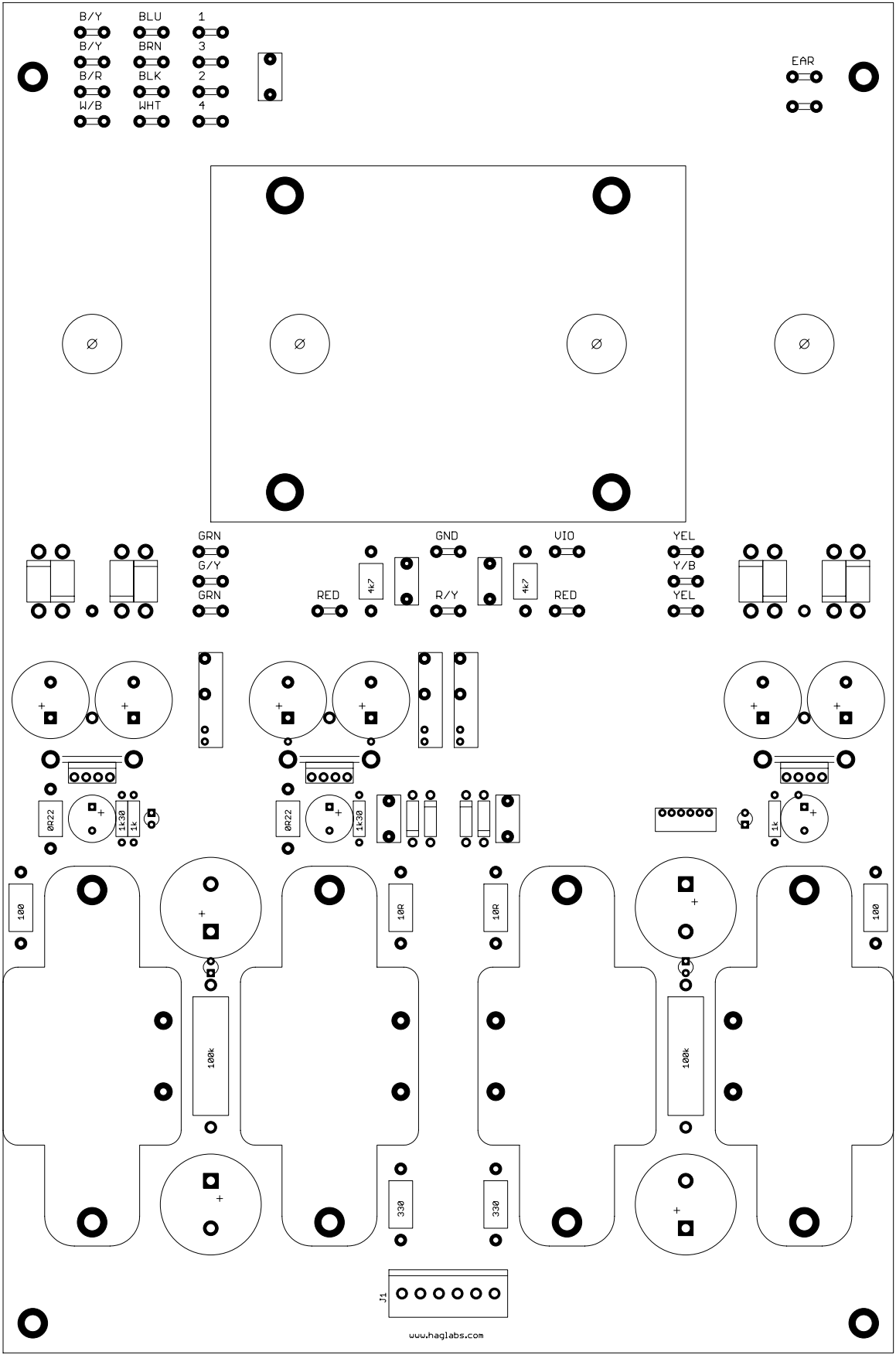
TITLE: RefProc

Document Number:

REV:

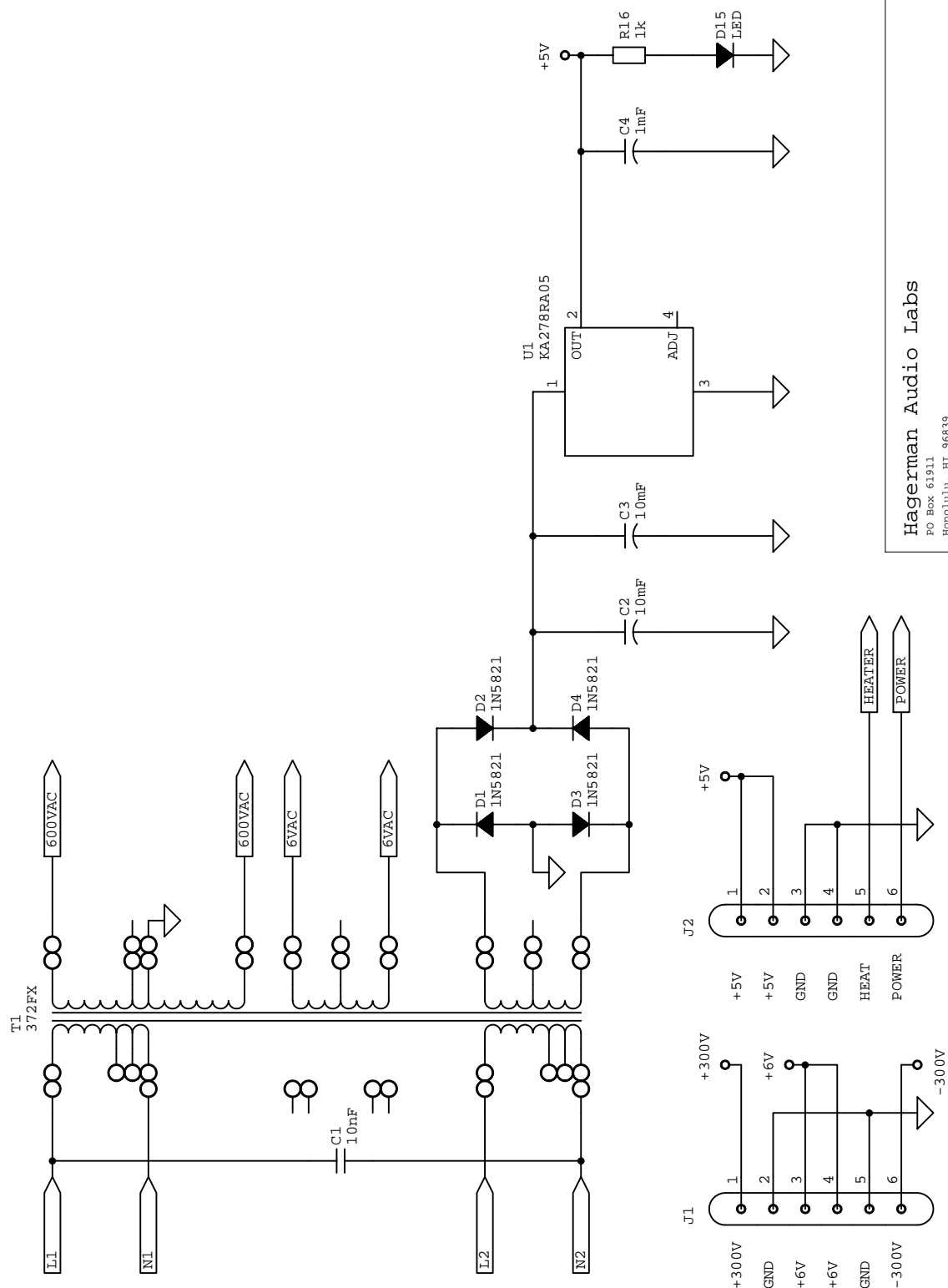
Date: 12/4/2012 4:05:34 PM

Sheet: 5/5



- B/Y
- B/Y
- B/R
- W/B
- BLU
- BRN
- BLK
- WHT
- 1
- 3
- 2
- 4

EAR



Hagerman Audio Labs
 PO Box 61911
 Honolulu, HI 96839

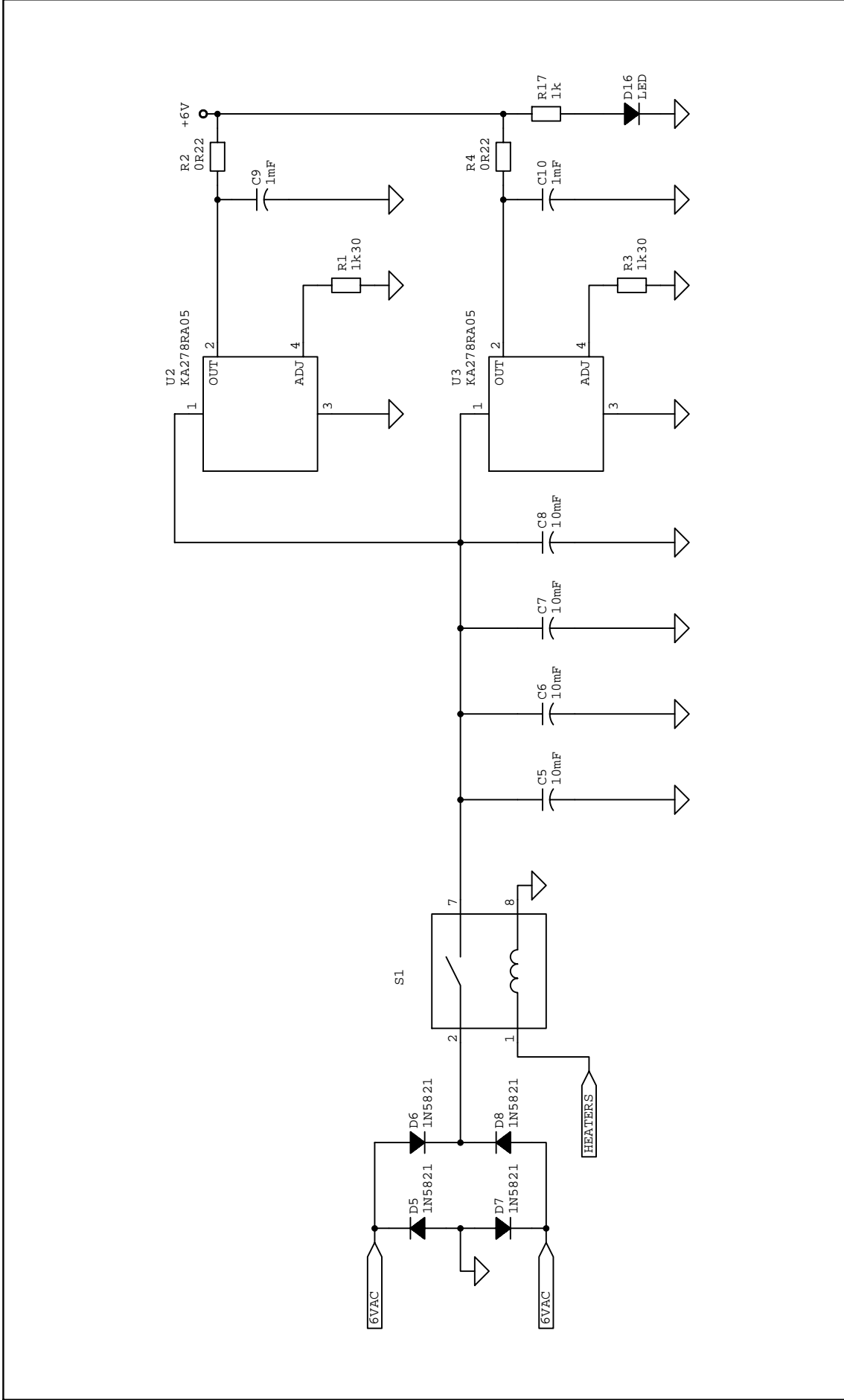
TITLE: RefSupply

Document Number:

REV:

Date: 12/4/2012 4:08:19 PM

Sheet: 1/3



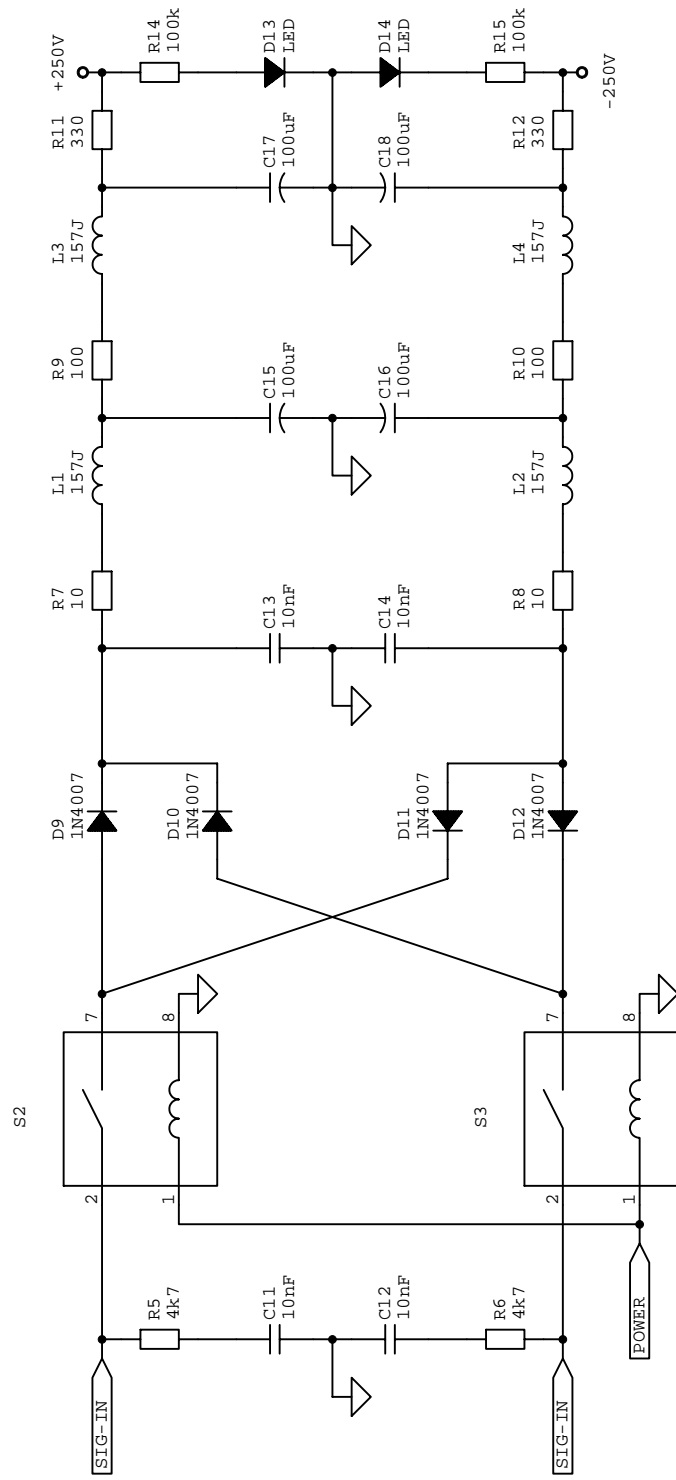
Hagerman Audio Labs
 PO Box 61911
 Honolulu, HI 96839

TITLE: RefSupply

Document Number:

REU:

Date: 12/4/2012 4:08:19 PM **Sheet:** 2/3



Hagerman Audio Labs
 PO Box 61911
 Honolulu, HI 96839

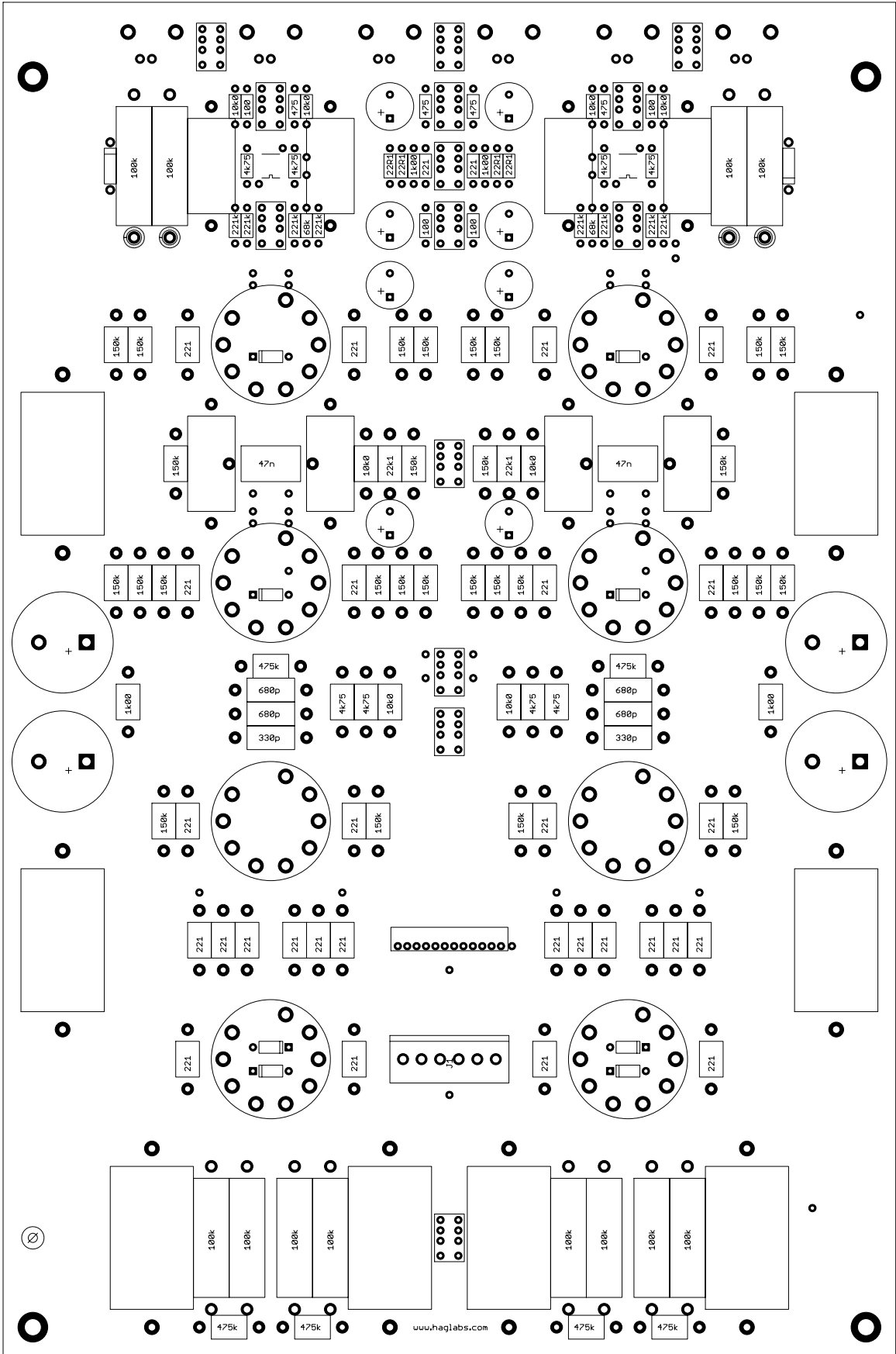
TITLE: RefSupply

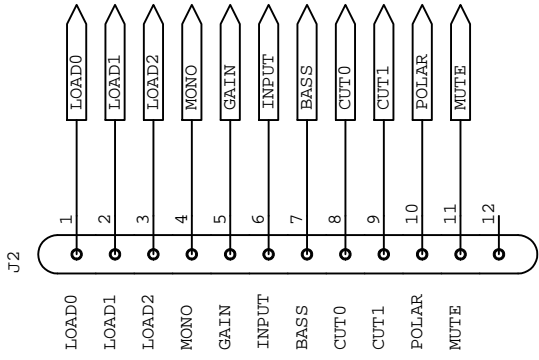
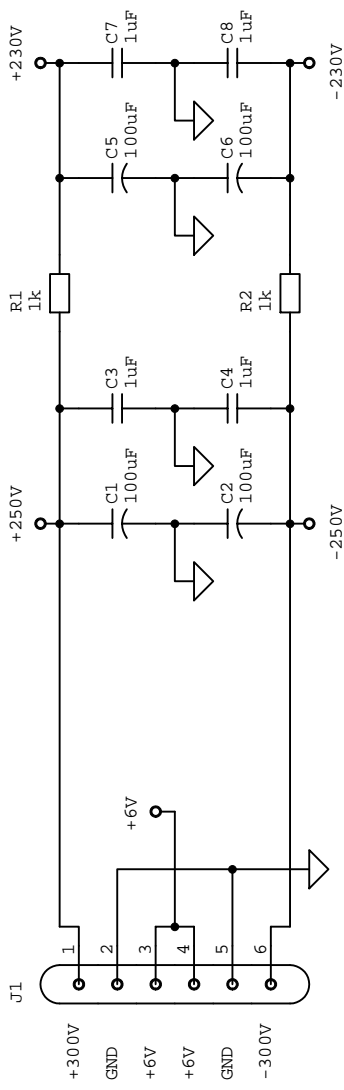
Document Number:

REV:

Date: 12/4/2012 4:08:19 PM

Sheet: 3/3





Hagerman Audio Labs
 PO Box 61911
 Honolulu, HI 96839

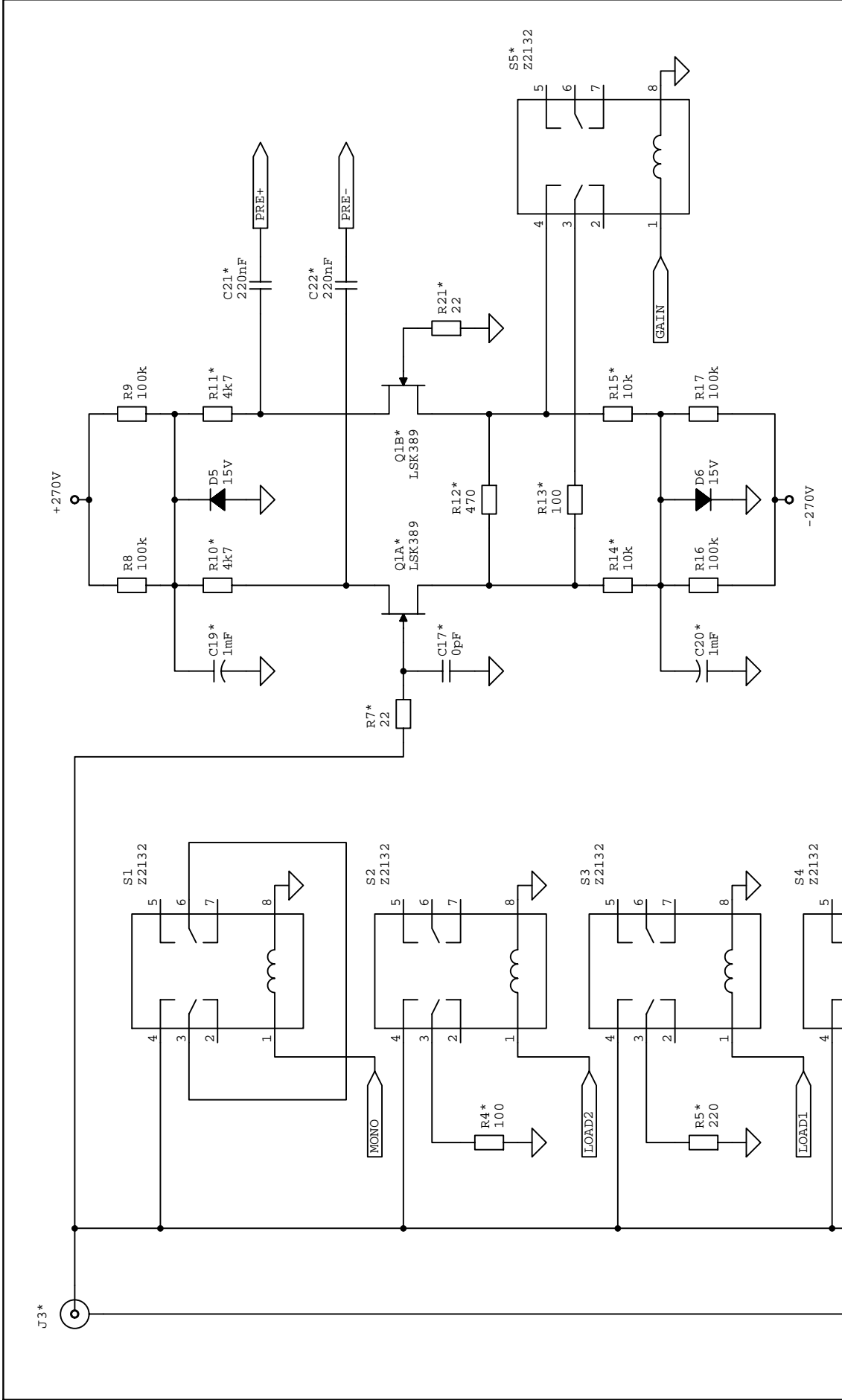
TITLE: RefPhono

Document Number:

REV:

Date: 12/29/2012 4:39:54 PM

Sheet: 1/6



Hagerman Audio Labs
 PO Box 61911
 Honolulu, HI 96839

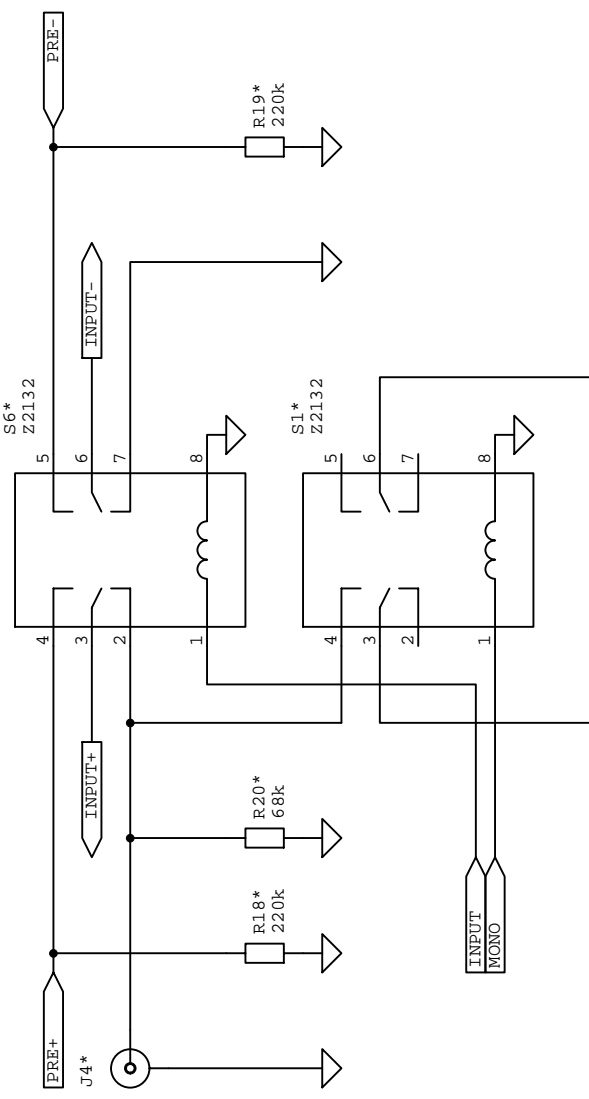
TITLE: RefPhono

Document Number:

REU:

Date: 12/29/2012 4:39:54 PM

Sheet: 2/6

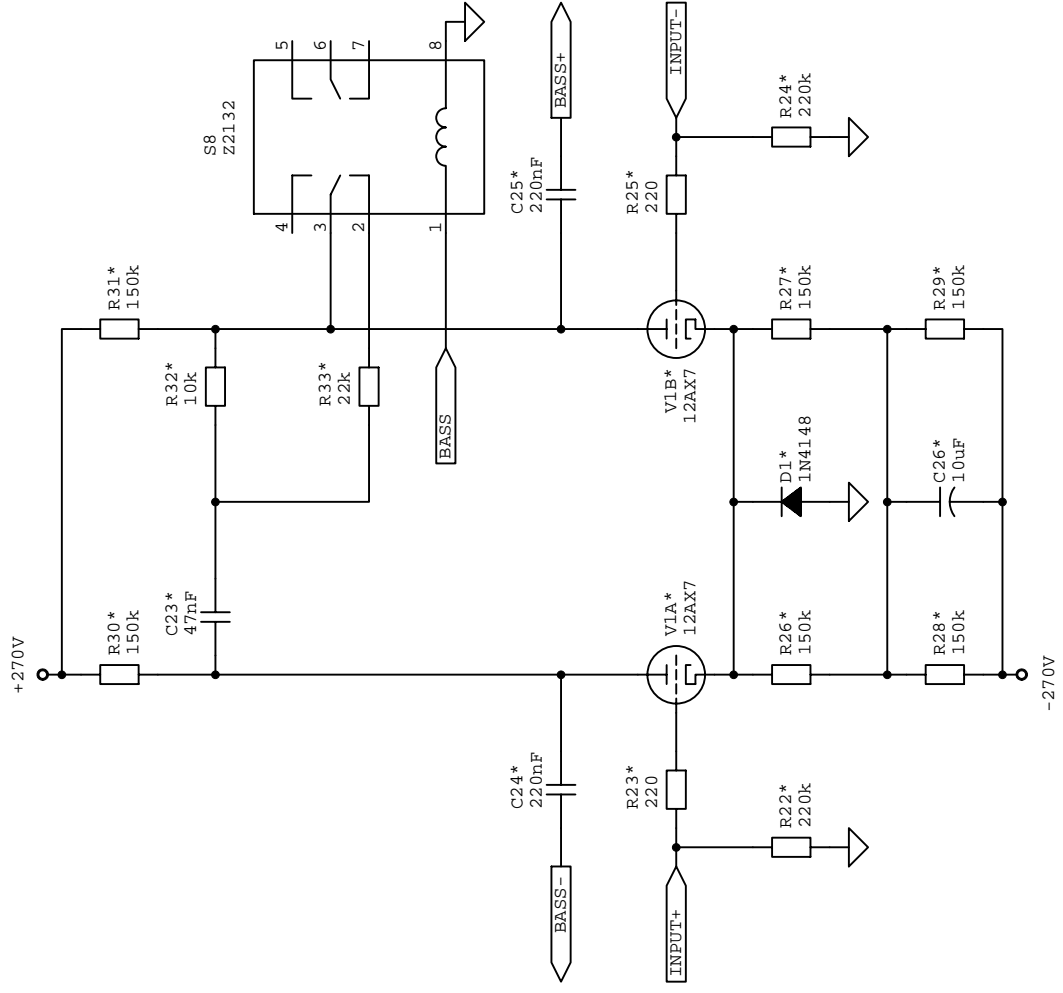


Hagerman Audio Labs
 PO Box 61911
 Honolulu, HI 96839

TITLE: RefPhono

Document Number: REV:

Date: 12/29/2012 4:39:54 PM Sheet: 3/6



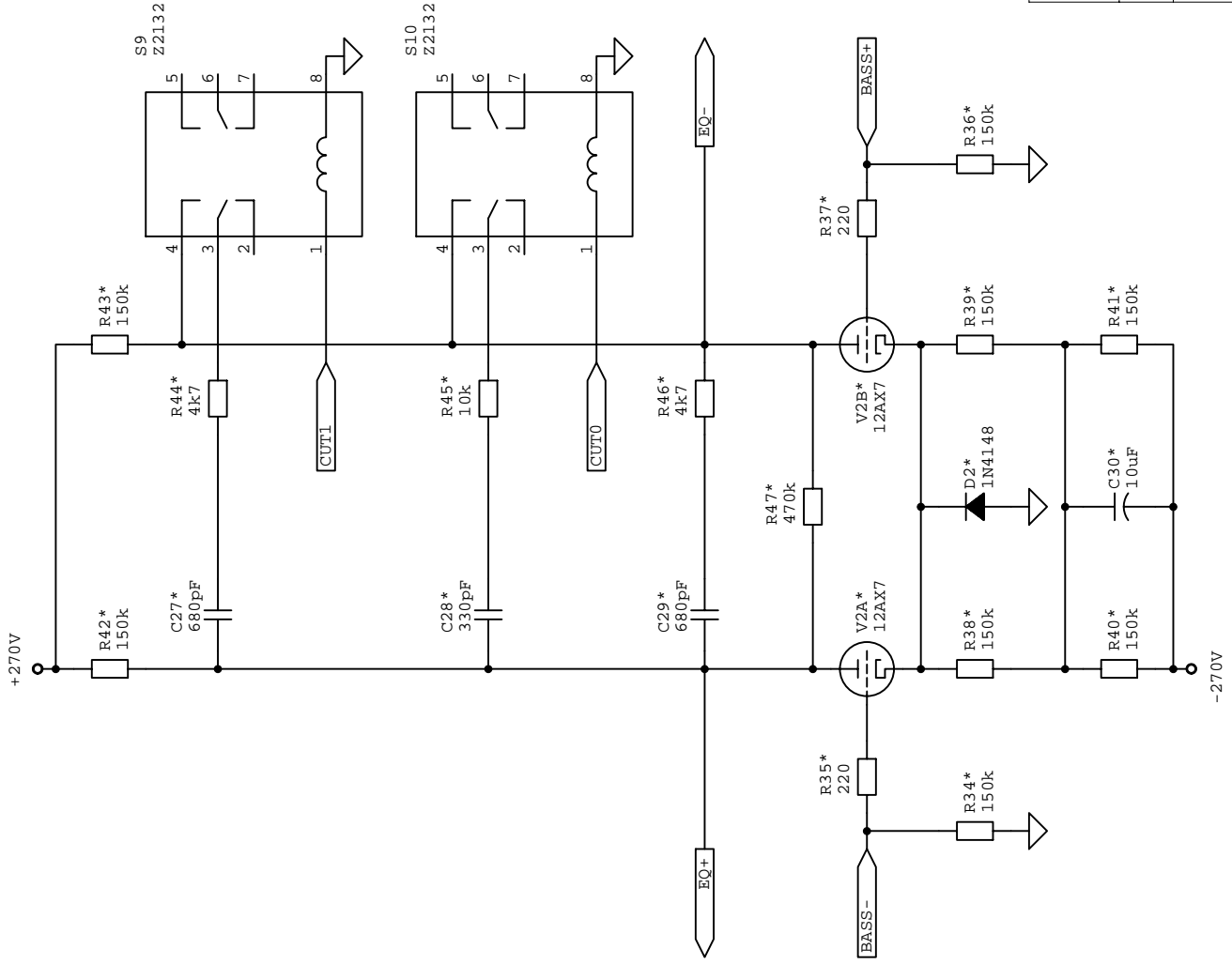
Hagerman Audio Labs
 PO Box 61911
 Honolulu, HI 96839

TITLE: RefPhono

Document Number:

REU:

Date: 12/29/2012 4:39:54 PM Sheet: 4/6



Hagerman Audio Labs
 PO Box 61911
 Honolulu, HI 96839

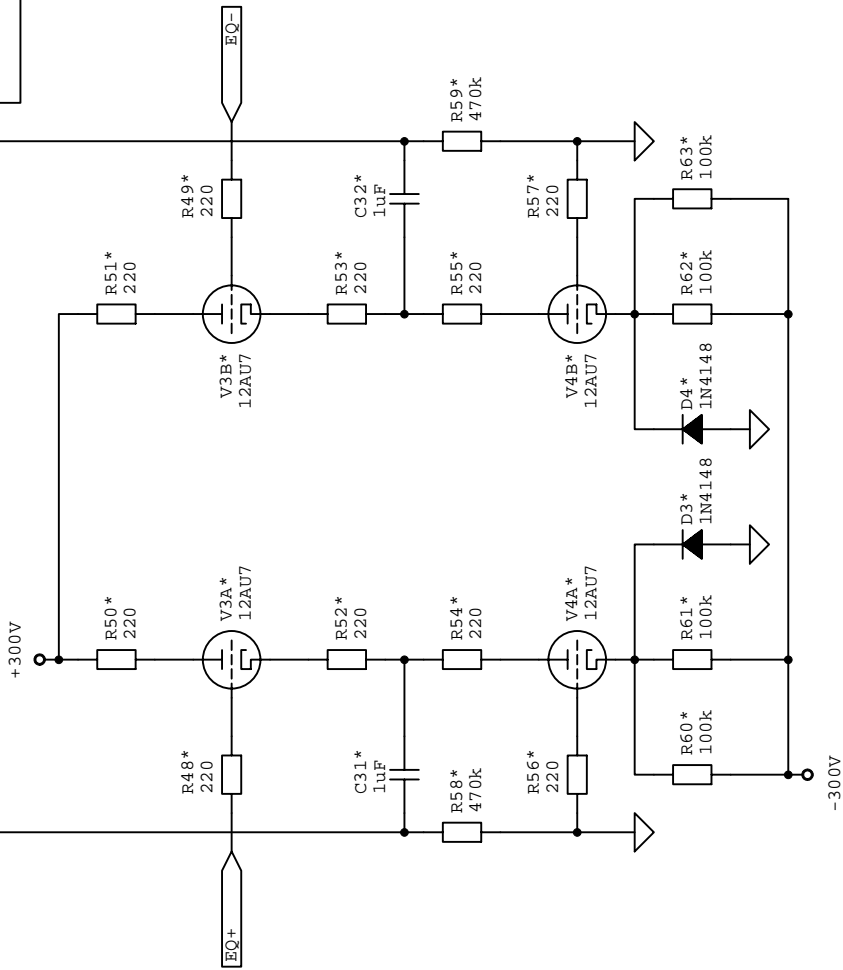
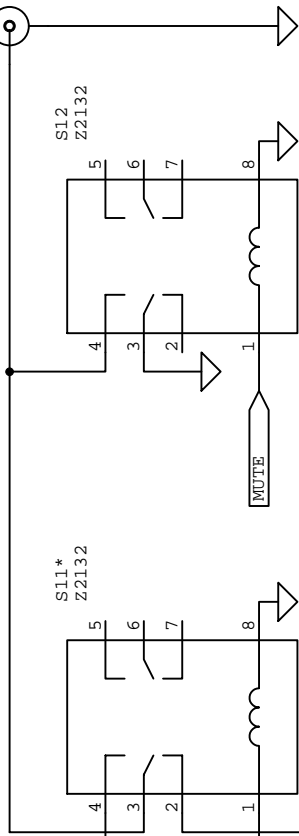
TITLE: RefPhono

Document Number:

REU:

Date: 12/29/2012 4:39:54 PM Sheet: 5/6

J5*



Hagerman Audio Labs
 PO Box 61911
 Honolulu, HI 96839

TITLE: RefPhono

Document Number:

REV:

Date: 12/29/2012 4:39:54 PM

Sheet: 6/6