

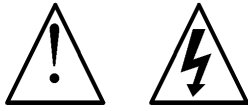


# StepUp

Transformer



Revised: 01/08/04



## Warnings

This product is completely passive and uses no dangerous voltages. However, care must be taken in its use. Before connecting to any other equipment, make sure power is turned off.

## Copyrights & Trademarks

© Copyright Hagerman Technology LLC 2003 - 2004. All rights reserved. No part of this document may be photocopied, reproduced, or translated to another language without the prior written consent of Hagerman Technology LLC.

## Disclaimer

The information contained in this document is subject to change without notice. Hagerman Technology LLC shall not be liable for errors contained herein or for consequential damages in connection with the furnishing, performance, or use of this material. See Chapter 4 for warranty information.

---

# 1 Before You Begin

## Description

Congratulations! You have just purchased one of the finest sounding and highest quality pieces of audio equipment available. The StepUp transformer was designed to mate with the Trumpet phono stage (or any other reference-class phono preamp having 47k ohm input impedance) to provide the additional gain required for low output moving coil cartridges. The handcrafted chassis matches the Trumpet in style and appearance using the same high quality machined maple end-panels and anti-vibration casework.

The StepUp transformer can be factory wired in three different gain settings, thanks to multiple primary windings. Available gains are 14dB, 20dB, and 26dB. The reflected load impedance as seen by the cartridge is 120 ohm, 470 ohm, and 1900 ohm respectively. Gain can be readjusted by returning to the factory. Additionally, there are locations for additional resistive and capacitive loading if desired.

The standard configuration includes shielded coaxial output cables. Optionally, the StepUp can be configured with output RCA jacks or built with customer-supplied cables.

## Features

- Stevens & Billington premium transformers
- Solid, anti-vibration chassis
- Low capacitive loading design
- Proprietary series transformer damping
- Available in gains of 14dB, 20dB, 26dB

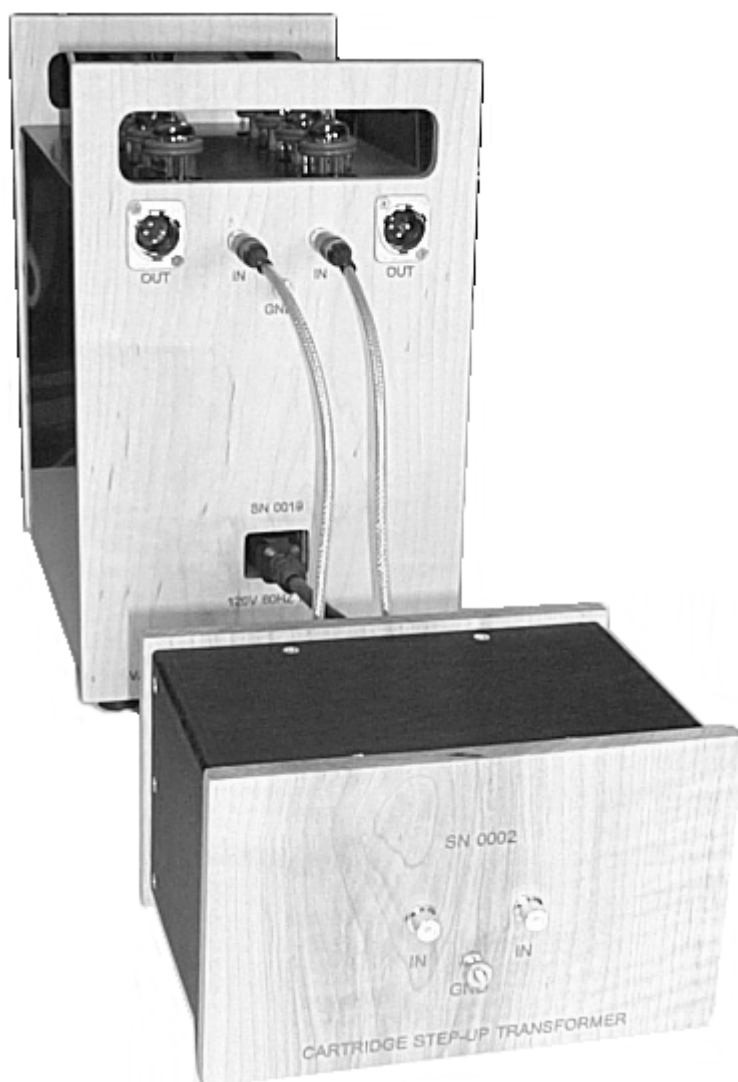
## Package Contents

Please inspect the contents of the package upon arrival. Check for any loose, broken or missing pieces. If there is any problem, contact Hagerman Technology immediately. Package should include the StepUp transformer and this manual.

# 2 Installation

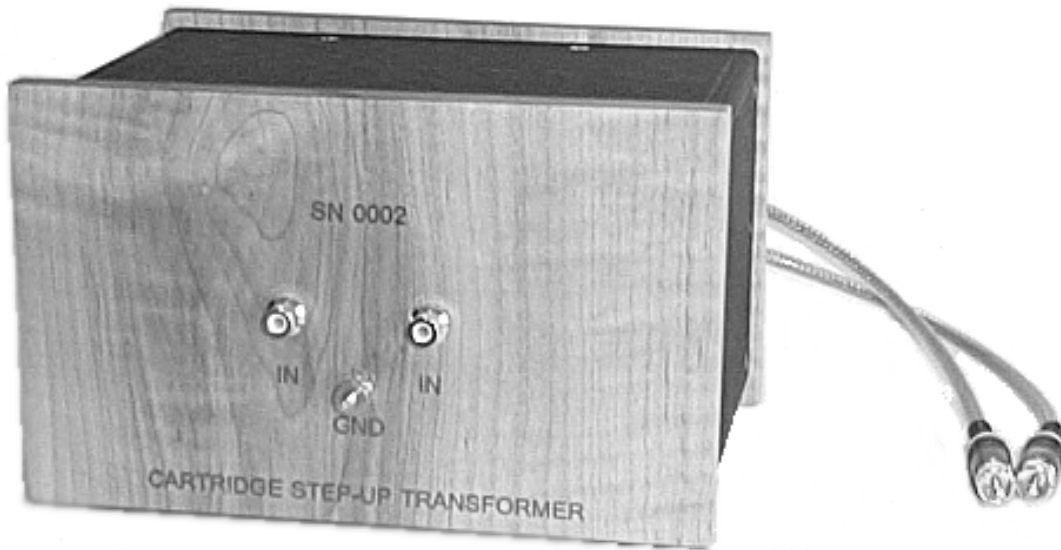
## Connections

Installing the StepUp is quite straightforward. It connects in series between the turntable and the Trumpet phono stage. Typically, the StepUp is located directly behind the Trumpet. The orientation of the internal transformers is optimized for this configuration to minimize stray magnetic field pickup. Connect the turntable outputs and ground to the input side of the StepUp, while connecting the output cables to the Trumpet.



## Loading

Many low output moving coil cartridges like to see a loading resistance much lower than the 47k ohm found in most phono stages. Fortunately, the StepUp provides inherent impedance conversion that is often satisfactory. Using a 10:1 step-up ratio, the resulting gain is 20dB and loading is 470 ohms.



For alternative loading, there are locations where additional resistance and capacitance can be added. Please contact the factory for more information.

## Hum

If properly installed and configured, there should be no audible hum. Nonetheless, hum is one of the most common problems encountered with high gain phono set-ups. There are many sources of hum generally caused by stray magnetic and electric fields or ground loops amid interconnects and power cords.

If you have hum, first try to reposition equipment to see if it is proximity or orientation sensitive. Then move cables around and apart. Check to see if there is a ground loop caused by chassis grounding through power cords. If trouble persists, please contact Hagerman Technology for help.

# 3 Specifications

The following specifications are subject to change without notice.

Item	Specification
Gain	14dB
	20dB
	26dB
Input Impedance *	1900 ohm
	470 ohm
	120 ohm
Bandwidth	5Hz to 150kHz
Size	7.25" x 4.5" x 5"
Weight	5 lbs.

\* Loaded by 47k ohm phono stage

---

# 4 Warranty & Service

## Warranty

Hagerman Technology LLC warrants this product free of defects in materials and workmanship for life. If you discover a defect, Hagerman Technology LLC will, at its option, repair or replace the product at no charge to you provided you return it during the warranty period, transportation charges prepaid to Hagerman Technology LLC. This warranty does not apply if the product has been damaged by negligence, accident, abuse or misuse or misapplication, has been damaged because it has been improperly connected to other equipment or has been modified without the express written permission of Hagerman Technology LLC. This warranty is limited to the replacement or repair of this product and not to damage to equipment of other manufacturers.

Any applicable implied warranties, including warranty of merchantability, are limited in duration to a period of the express warranty as provided herein beginning with the original date of purchase and no warranties, whether express or implied shall apply to the product thereafter.

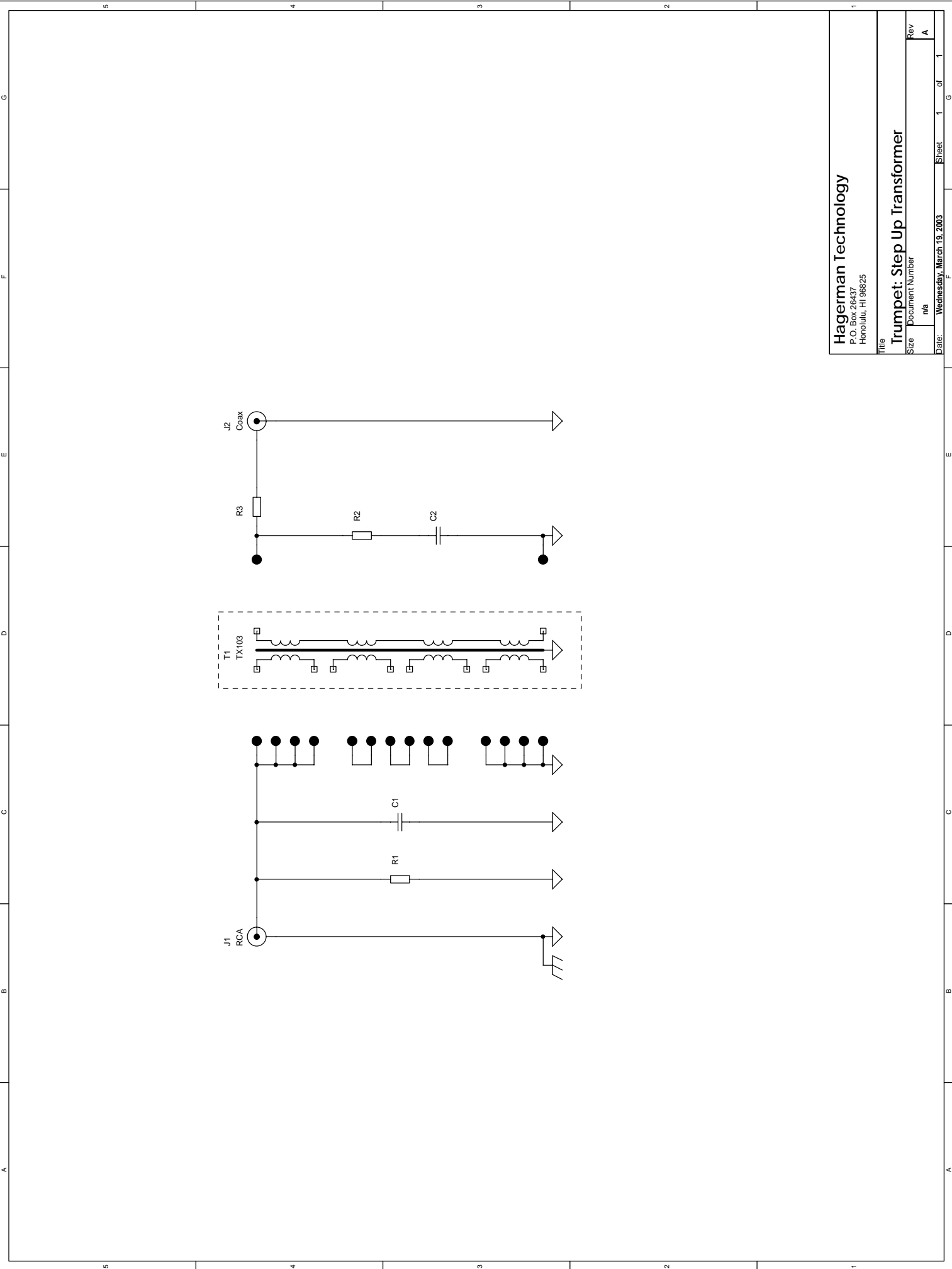
Under no circumstances shall Hagerman Technology LLC be liable for any loss, direct, indirect, incidental, special, or consequential damage arising out of or in connection with the use of this product.

## Service

Contact Hagerman Technology for service at <http://www.hagtech.com>.

Hagerman Technology LLC  
PO Box 26437  
Honolulu, HI 96825 USA

808-383-2704 (voice)  
808-394-6076 (fax)



Hagerman Technology  
 P.O. Box 26467  
 Honolulu, HI 96825

Title: Trumpet: Step Up Transformer

Size	Document Number	Rev
	na	A

Date: Wednesday, March 19, 2003

Sheet 1 of 1